

Counselling Code : MTEC

Estd : 1999

JNTUH College Code : 86



MOTHER THERESSA COLLEGE OF ENGINEERING & TECHNOLOGY

(Approved by A.I.C.T.E, New Delhi & Affiliated to J.N.T.U Hyderabad)

P.P.Colony (Po.), Peddabonkuru (Vill), PEDDAPALLI (Mdl. & Dist.) - 505174, Telangana State.

Website : www.mtec86.ac.in E-mail: mtec.86@gmail.com Contact : +919849472523 , +91 9542709545, +91 9989959556.

STUDENTS FEEDBACK ON CURRICULUM ACADEMIC YEAR 2019-2020

1. OBJECTIVE OF FEED BACK:

The college is affiliate to Jawaharlal Nehru Technological University, Hyderabad. The syllabus finalized by JNTUH is implemented in the affiliated colleges. The IQAC of the college identifies the curricular gaps and plans for co-curricular/extracurricular activities in college. The college obtains feedback from all the stakeholders like students, alumni, employer, and teachers on curriculum/syllabus to enrich the quality of activities performed in college for improvement of the professional skills, employability and entrepreneurial skills of the students.

2. SUMMARY OF FEEDBACK OBTAINED FROM THE STUDENTS:

SNO	STAKE HOLDERS	NO. OF SAMPLE FEEDBACKS ANALYSED
1	STUDENTS	100
2	TEACHERS	50
3	ALUMNI	15
4	EMPLOYERS	2

2.The feedback on curriculum was Taken from the students of all years, Teachers, Alumni, Employers at the end of each academic year.

PRINCIPAL
PRINCIPAL
MOTHER THERESSA
College of Engineering & Technology
PEDDAPALLI-505 174.



PRINCIPAL
MOTHER THERESSA
College of Engineering & Technology
PEDDAPALLI-505 174.

Counselling Code : MTEC

Estd : 1999

JNTUH College Code : 86



MOTHER THERESSA COLLEGE OF ENGINEERING & TECHNOLOGY

(Approved by A.I.C.T.E, New Delhi & Affiliated to J.N.T.U Hyderabad)

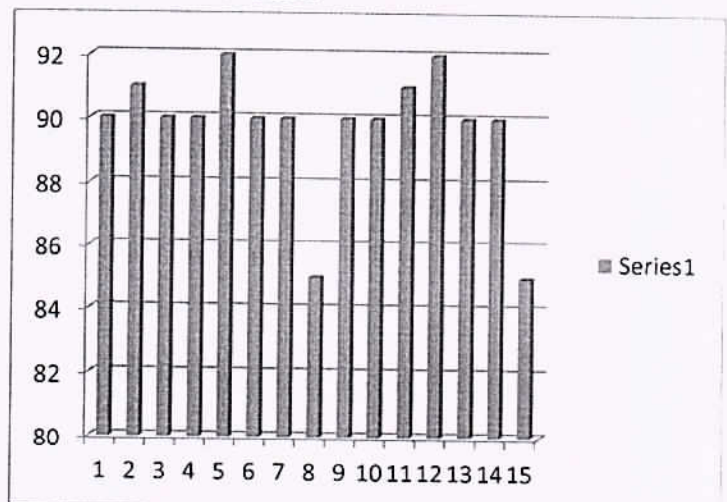
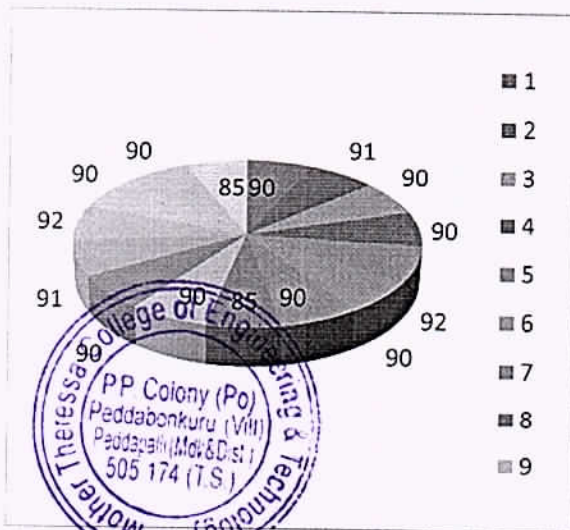
P.P.Colony (Po.), Peddabonkuru (Vill), PEDDAPALLI (Mdl. & Dist.) - 505174, Telangana State.

Website : www.mtec86.ac.in E-mail: mtec.86@gmail.com Contact : +919849472523 , +91 9542709545, +91 9989959556.

STUDENTS FEEDBACK AND ANALYSYS ON CURRICULUM DESIGN 2019- 2020

S.No	QUESTIONNARE	FEEDBACK%
1	Materiality of syllabus of each course to the recent trends and developments	90
2	Competitiveness of the subject modules in aiding the academic growth of	91
3	Rate the activities offered by the institution related to experimental and	90
4	Practical Exposure to ICT tools	90
5	Capableness of the college in training students for the competitive exam	92
6	Timely rectification of grievances	90
7	Scope for career counseling and placements	90
8	Clarity of internal assessment	85
9	Sports, co-curricular and extracurricular activities offered by the college	90
10.	Are the class rooms and laboratories adequately equipped and properly	90
11	E-Learning facilities and ample of books available in the library	91
12	Assess the scholarships and the free ships offered	92
13	Adequacy of computers for academic purpose	90
14	Standards of food and tidiness in the canteen	90
15	Overall aura of the college	85

STUDENT FEEDBACK ANALYSIS 2019-2020



Green Praveen
PRINCIPAL
PRINCIPAL
MOTHER THERESSA
 College of Engineering & Technology
 PEDDAPALLI-505 174.

Counselling Code : MTEC

Estd : 1999

JNTUH College Code : 86



MOTHER THERESSA COLLEGE OF ENGINEERING & TECHNOLOGY

(Approved by A.I.C.T.E, New Delhi & Affiliated to J.N.T.U Hyderabad)

P.P.Colony (Po.), Peddabonkuru (Vill), PEDDAPALLI (Mdl. & Dist.) - 505174, Telangana State.

Website : www.mtec86.ac.in E-mail: mtec.86@gmail.com Contact : +919849472523 , +91 9542709545, +91 9989959556.

TEACHERS FEEDBACK ON CURRICULUM ACADEMIC YEAR 2019-2020

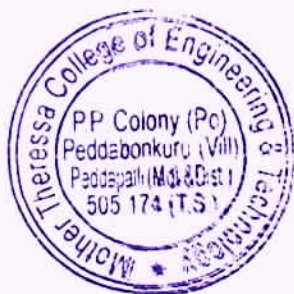
1.OBJECTIVE OF FEED BACK:

The college is affiliate to Jawaharlal Nehru Technological University, Hyderabad. The syllabus finalized by JNTUH is implemented in the affiliated colleges. The IQAC of the college identifies the curricular gaps and plans for co-curricular/extracurricular activities in college. The college obtains feedback from all the stakeholders like students, alumni, employer, and teachers on curriculum/syllabus to enrich the quality of activities performed in college for improvement of the professional skills, employability and entrepreneurial skills of the students.

2. SUMMARY OF FEEDBACK OBTAINED FROM THE STUDENTS:

SNO	STAKE HOLDERS	NO. OF SAMPLE FEEDBACKS ANALYSED
1	STUDENTS	100
2	TEACHERS	50
3	ALUMNI	15
4	EMPLOYERS	2

2.The feedback on curriculum was Taken from the students of all years, Teachers, Alumni, Employers at the end of each academic year.



PRINCIPAL
PRINCIPAL
MOTHER THERESSA
College of Engineering & Technology
PEDDAPALLI-505 174.

PRINCIPAL
MOTHER THERESSA
College of Engineering & Technology
PEDDAPALLI-505 174.

Counselling Code : MTEC

Estd : 1999

JNTUH College Code : 86



MOTHER THERESSA COLLEGE OF ENGINEERING & TECHNOLOGY

(Approved by A.I.C.T.E, New Delhi & Affiliated to J.N.T.U Hyderabad)

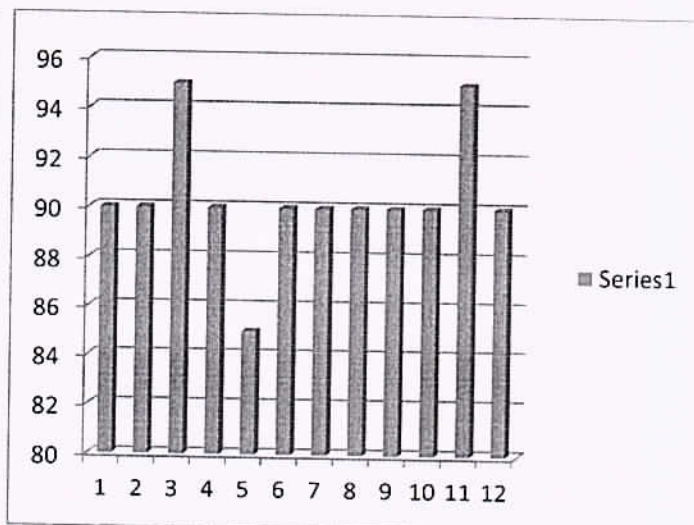
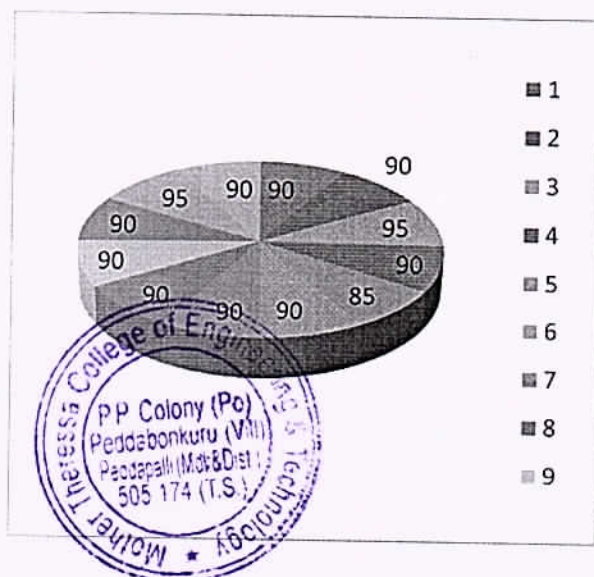
P.P.Colony (Po.), Peddabonkuru (Vill), PEDDAPALLI (Mdl. & Dist.) - 505174, Telangana State.

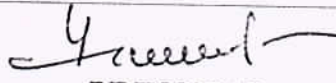

Website : www.mtec86.ac.in E-mail: mtec.86@gmail.com Contact : +919849472523 , +91 9542709545, +91 9989959556.

TECHERS FEEDBACK AND ANALYSYS ON CURRICULUM DESIGN 2019-2020

SNO	QUESTIONNARE	FEEDBACK %
1	Course content is apt to routine needs of the industry	90
2	Rate the feasibility available to offer elective subjects	90
3	Cheering for industry-Academic interaction	95
4	Support to research and ingenious abilities	90
5	Privilege for a teacher to adopt pioneering technologies and JCT tools	85
6	Opportunities to organize professional development programs	90
7	Scope for financial assistance to attend programs in other institutions	90
8	Availability of Wi-Fi and Internet facility with sufficient bandwidth	90
9	Assess the availability of computers for academic purpose	90
10.	Purview for sensitization students to social issues for their holistic	90
II	Objective set by the add on programs enabled in improving inter and intellectual skills	95
12	Institute facilitates career growth and exposure to recent technologies	90

TEACHER FEEDBACK ANALYSIS 2019-2020




PRINCIPAL

PRINCIPAL
MOTHER THERESSA
 College of Engineering & Technology
 PEDDAPALLI-505 174.

Counselling Code : MTEC

Estd : 1999

JNTUH College Code : 86



MOTHER THERESSA COLLEGE OF ENGINEERING & TECHNOLOGY

(Approved by A.I.C.T.E, New Delhi & Affiliated to J.N.T.U Hyderabad)

P.P.Colony (Po.), Peddabonkuru (Vill), PEDDAPALLI (Mdl. & Dist.) - 505174, Telangana State.

Website : www.mtec86.ac.in E-mail: mtec.86@gmail.com Contact : +919849472523 , +91 9542709545, +91 9989959556

EMPLOYER FEEDBACK ON CURRICULUM ACADEMIC YEAR 2019-2020

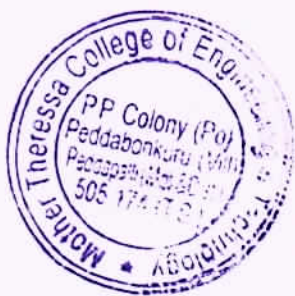
1. OBJECTIVE OF FEED BACK:

The college is affiliate to Jawaharlal Nehru Technological University, Hyderabad. The syllabus finalized by JNTUH is implemented in the affiliated colleges. The IQAC of the college identifies the curricular gaps and plans for co-curricular/extracurricular activities in college. The college obtains feedback from all the stakeholders like students, alumni, employer, and teachers on curriculum/syllabus to enrich the quality of activities performed in college for improvement of the professional skills, employability and entrepreneurial skills of the students.

2. SUMMARY OF FEEDBACK OBTAINED FROM THE STUDENTS:

S.NO	STAKEHOLDERS	NO.OF SAMPLE FEEDBACKS ANALYSED
1	STUDENTS	100
2	TEACHERS	50
3	ALUMNI	15
4	EMPLOYERS	2

2. The feedback on curriculum was taken from the students of all years, Teachers, Alumni, Employers at the end of each academic year.



PRINCIPAL
PRINCIPAL
MOTHER THERESSA
College of Engineering & Technology
PEDDAPALLI-505 174.

PRINCIPAL
MOTHER THERESSA
College of Engineering & Technology
PEDDAPALLI-505 174.

Counselling Code : MTEC

Estd : 1999

JNTUH College Code : 86



MOTHER THERESSA COLLEGE OF ENGINEERING & TECHNOLOGY

(Approved by A.I.C.T.E, New Delhi & Affiliated to J.N.T.U Hyderabad)

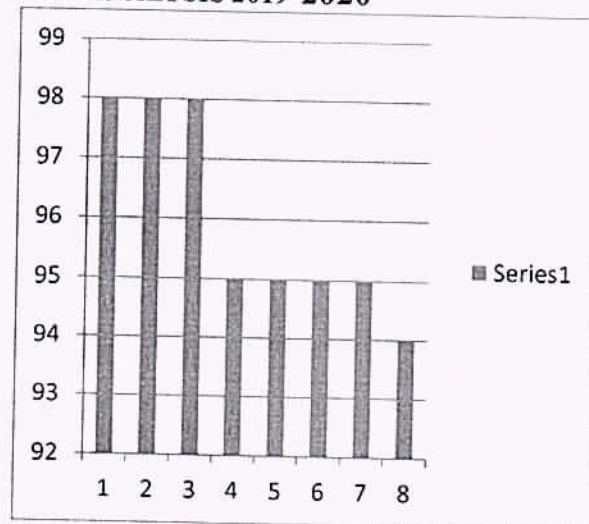
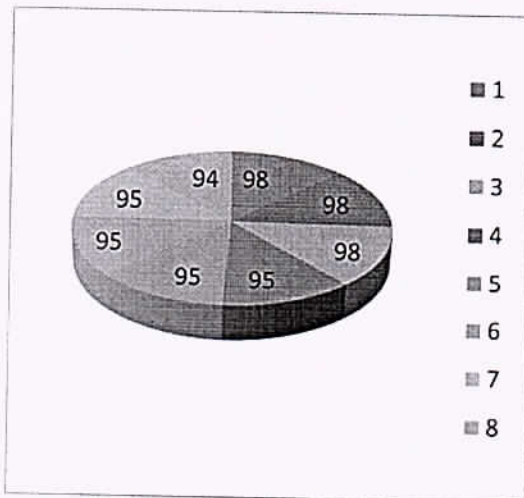
P.P.Colony (Po.), Peddabonkuru (Vill), PEDDAPALLI (Mdl. & Dist.) - 505174, Telangana State.

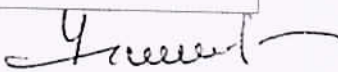
Website : www.mtec86.ac.in E-mail: mtec.86@gmail.com Contact : +919849472523 , +91 9542709545, +91 9989959556

EMPLOYER FEEDBACK AND ANALYSIS ON CURRICULUM DESIGN 2019-2020


S.No	QUESTIONNAIRE	FEEDBACK %
1	Ability to contribute to the goal of the organization	98
2	Technical knowledge/skill Ability to manage/leadership Innovativeness	98
3	Creativity	98
4	Relationship with seniors/peers/subordinates	95
5	Involvement in social activities	95
6	Ability and motivation for social activity	95
7	Obligation to work beyond schedule if required	95
8	Overall impression about their performance	94

EMPLOYER FEEDBACK ANALYSIS 2019-2020




PRINCIPAL
PRINCIPAL
MOTHER THERESSA
College of Engineering & Technology
PEDDAPALLI-505 174.




PRINCIPAL
MOTHER THERESSA
College of Engineering & Technology
PEDDAPALLI-505 174.

Counselling Code : MTEC

Estd : 1999

JNTUH College Code : 86



MOTHER THERESSA COLLEGE OF ENGINEERING & TECHNOLOGY

(Approved by A.I.C.T.E, New Delhi & Affiliated to J.N.T.U Hyderabad)

P.P.Colony (Po.), Peddabonkuru (Vill), PEDDAPALLI (Mdl. & Dist.) - 505174, Telangana State.

Website : www.mtec86.ac.in E-mail: mtec.86@gmail.com Contact : +919849472523, +91 9542709545, +91 9989959556

ALUMNI FEEDBACK ON CURRICULUM ACADEMIC YEAR 2019-2020

1. OBJECTIVE OF FEED BACK:

The college is affiliate to Jawaharlal Nehru Technological University, Hyderabad. The syllabus finalized by JNTUH is implemented in the affiliated colleges. The IQAC of the college identifies the curricular gaps and plans for co-curricular/extracurricular activities in college. The college obtains feedback from all the stakeholders like students, alumni, employer, and teachers on curriculum/syllabus to enrich the quality of activities performed in college for improvement of the professional skills, employability and entrepreneurial skills of the students.

2. SUMMARY OF FEEDBACK OBTAINED FROM THE STUDENTS:

SNO	STAKE HOLDERS	NO. OF SAMPLE FEEDBACKS ANALYSED
1	STUDENTS	100
2	TEACHERS	50
3	ALUMNI	15
4	EMPLOYERS	2

2.The feedback on curriculum was Taken from the students of all years, Teachers, Alumni, Employers at the end of each academic year.

**PRINCIPAL
PRINCIPAL
MOTHER THERESSA
College of Engineering & Technology
PEDDAPALLI-505 174.**



**PRINCIPAL
MOTHER THERESSA
College of Engineering & Technology
PEDDAPALLI-505 174.**

Counselling Code : MTEC

Estd : 1999

JNTUH College Code : 86



MOTHER THERESSA COLLEGE OF ENGINEERING & TECHNOLOGY

(Approved by A.I.C.T.E, New Delhi & Affiliated to J.N.T.U Hyderabad)

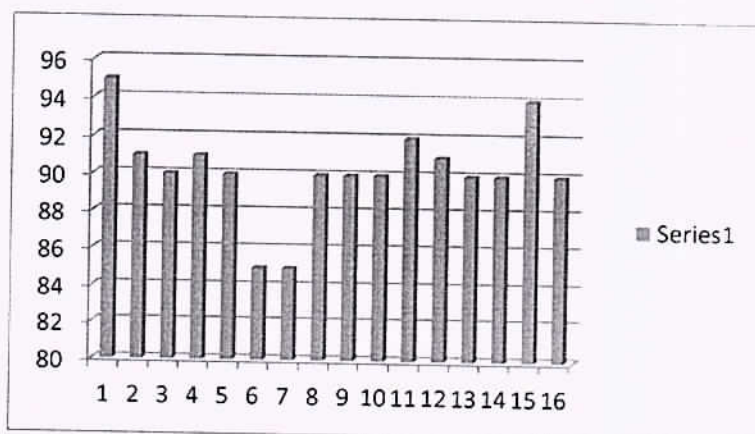
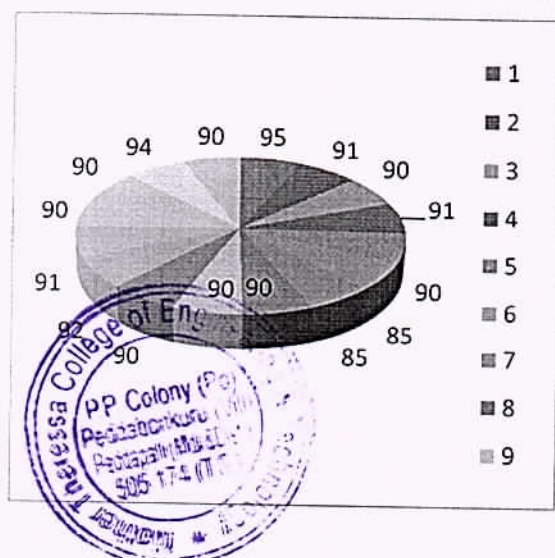
P.P.Colony (Po.), Peddabonkuru (Vill), PEDDAPALLI (Mdl. & Dist.) - 505174, Telangana State.

Website : www.mtec86.ac.in E-mail: mtec.86@gmail.com Contact : +91 9849472523, +91 9542709545, +91 9989959556

ALUMNI FEEDBACK AND ANALYSYS ON CURRICULUM DESIGN
2019-2020

S.No	QUESTIONNARE	FEEDBACK %
1	Math, Science, Humanities and professional discipline, (if applicable)	95
2	Problem formulation and solving skills	91
3	Collecting and analyzing appropriate data	90
4	Ability to link theory to practice.	91
5	Ability to design a system component or process	90
6	Oral communication	85
7	Report writing	85
8	Presentation skills	90
9	Ability to work in teams.	90
10	Ability to work in arduous /Challenging situation	90
II	Independent thinking	92
12	Appreciation of ethical Values	91
13	Resource and Time management skills	90
14	Judgment	90
15	Discipline	94
16	Career Opportunities	90

ALUMNI FEEDBACK ANALYSIS 2019-2020



[Signature]
PRINCIPAL
MOTHER THERESSA
College of Engineering & Technology
PEDDAPALLI-505 174.

[Signature]
PRINCIPAL
PRINCIPAL
MOTHER THERESSA